

# Plan de situation Terrain Dapelogo - approx. au 2/1000<sup>ème</sup> (1 cm = 5m)



 Forage du collège

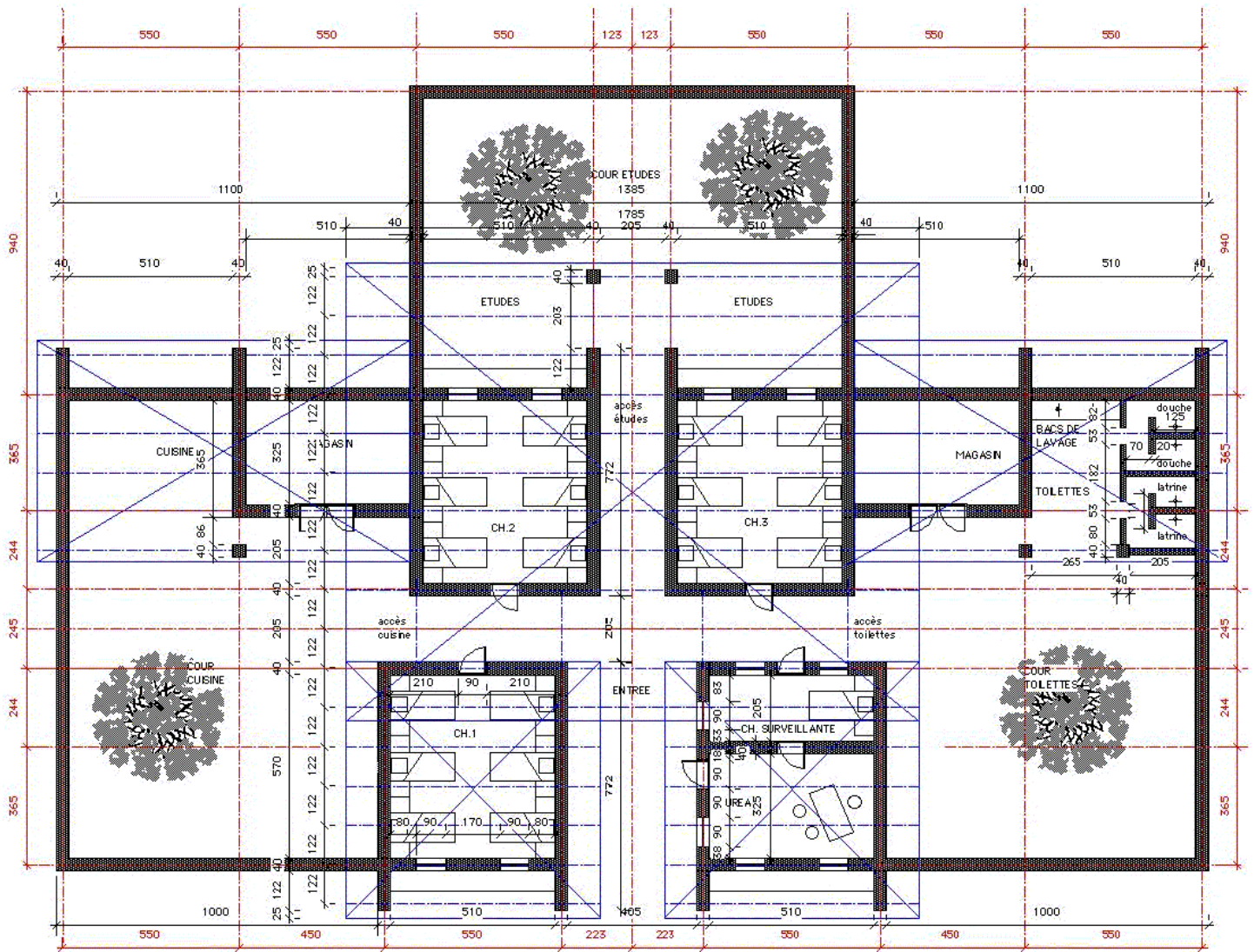
vers Dapelogo ←

Piste

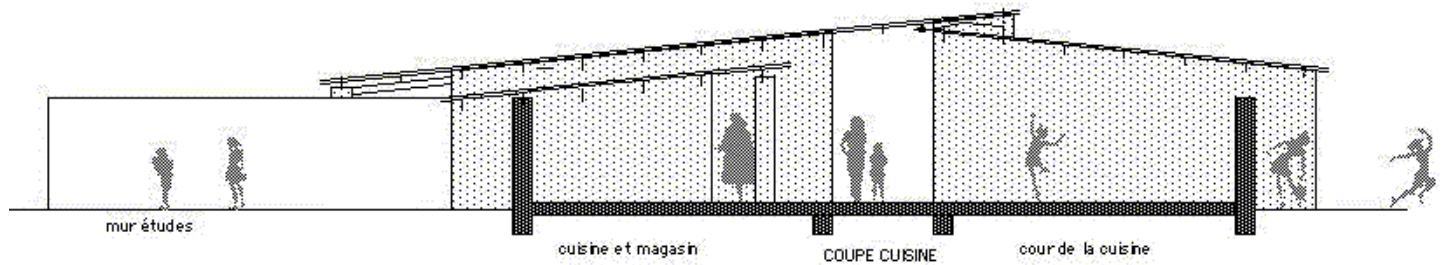
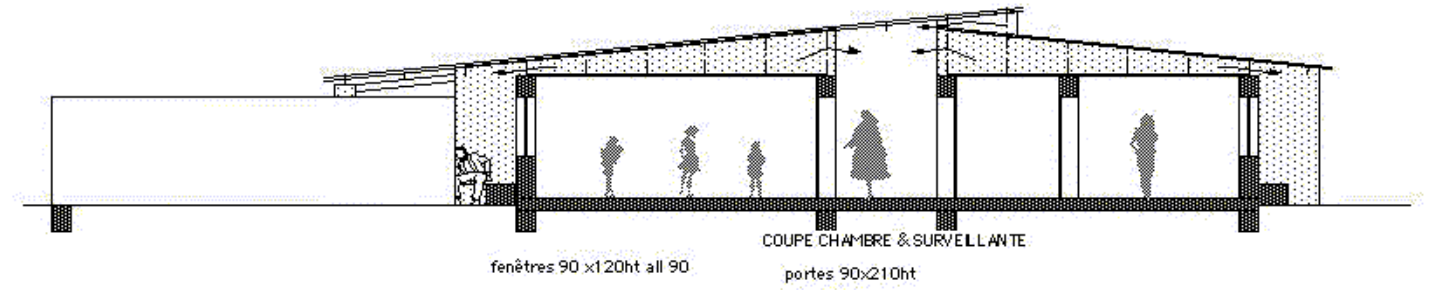
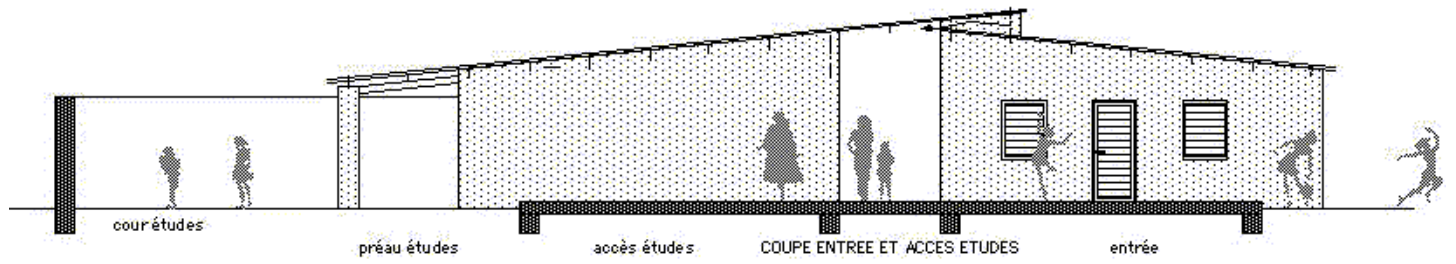
→ vers Korom

↓ vers le collège (env. 500 m)

# Plan coté modules 1 et 2



# Plan de coupe - schéma de l'aération



# Plan non coté du module 3

